

The Influences of Land-Based Input on Nutrient Pollution Along The Turkish Coasts of The Black Sea

Ahsen Yüksek, Ahmet E. Kideys*, Halil İbrahim Sur, Hüsne Altıok, Erdoğan Okuş,

**Istanbul University, Institute of Marine Science and Management
Middle East Technical University, Institute of Marine Sciences**

Contact Addresses

- Ahsen Yüksek
ayukse@istanbul.edu.tr

- Ahmet Kideyş
kideys@ims.metu.edu.tr

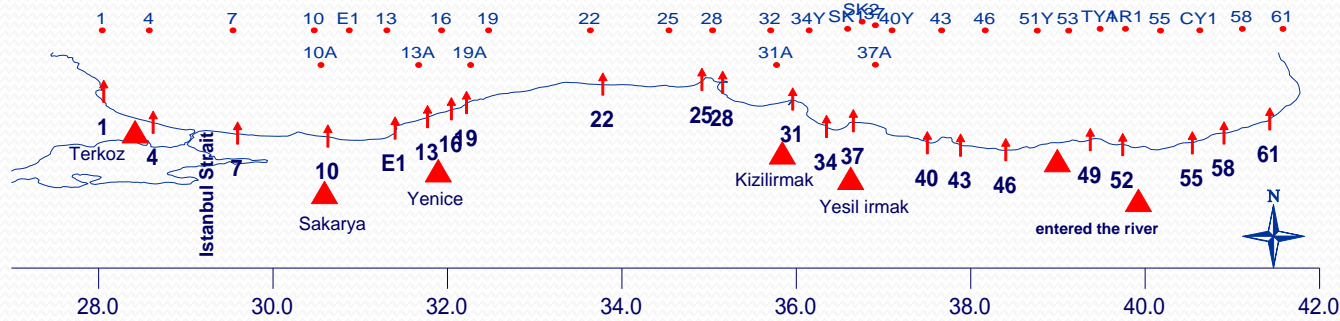
The Black Sea

3 6 9 12Y E3 15Y 18Y 21Y 24 27 33Y 36 39Y 45 48 54Y 57Y 63Y

~ 5 mile stations (100 m)

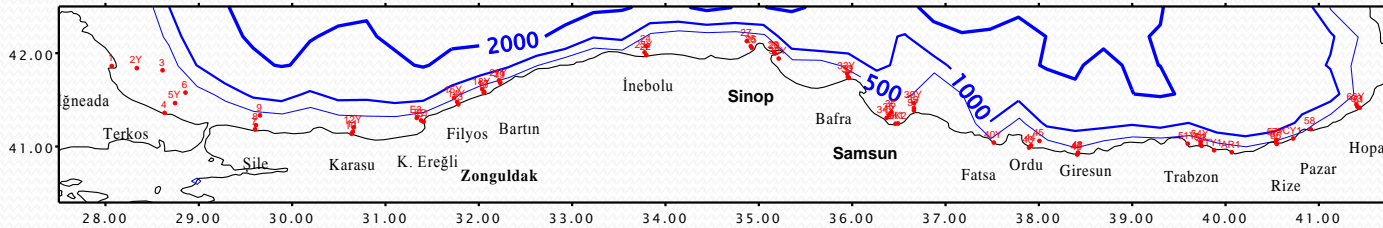
2Y 5Y 8 11 E2 14Y 17 21 23Y 26 29 30Y 33 35 39 44 47 54 57 63

~ 3 mile stations (50 m)

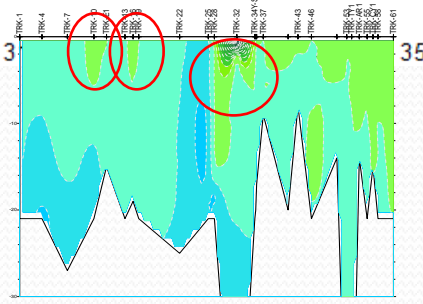
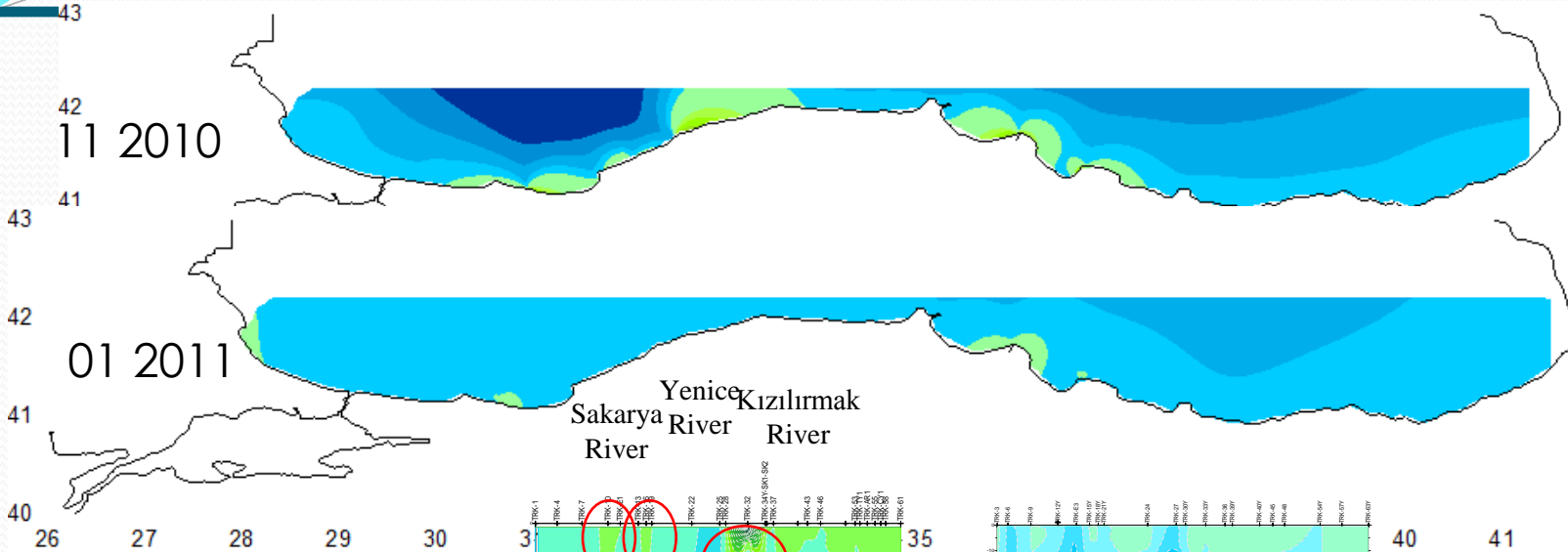
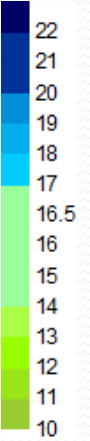


~ 1 mile stations (20 m)

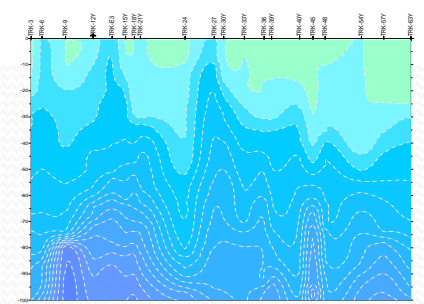
- ▲ important inputs
- ↑ The station line



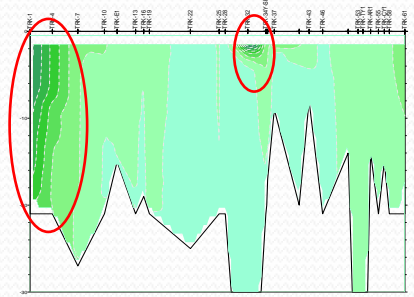
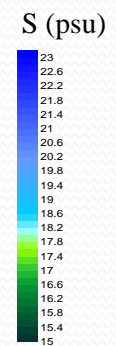
‰ S



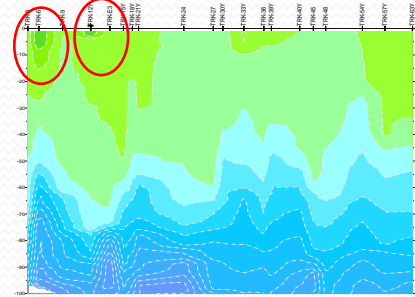
Danube Kızılırmak River



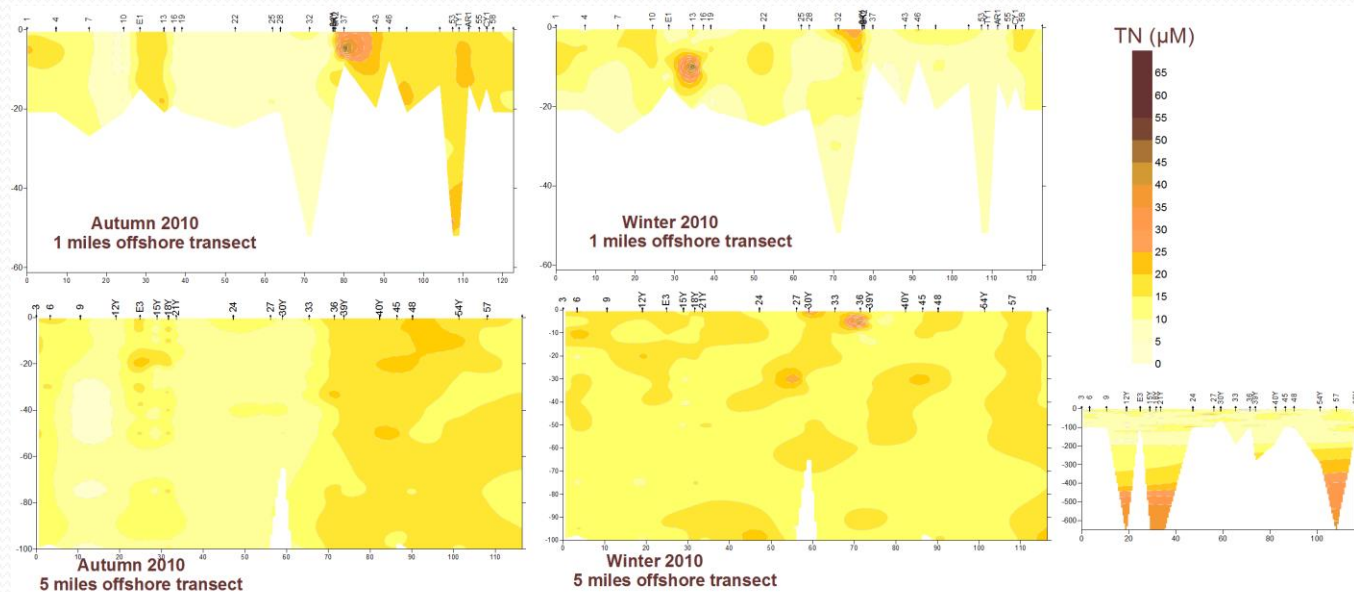
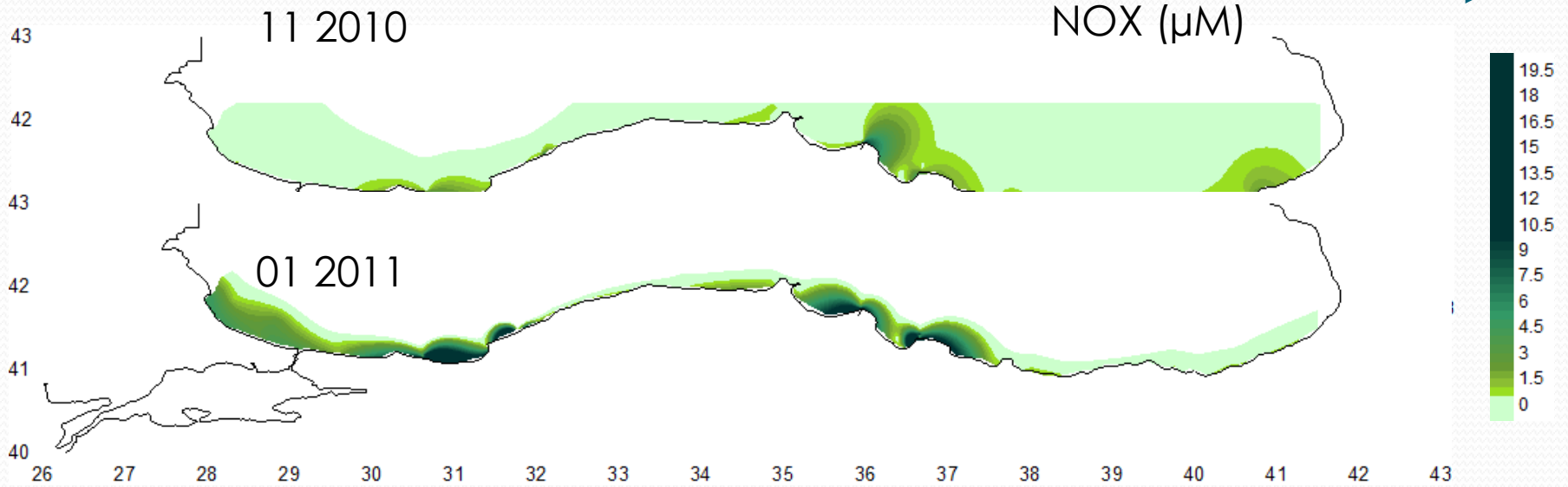
Danube Sakarya River

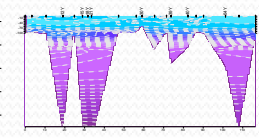
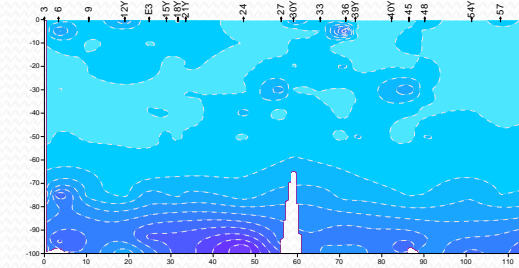
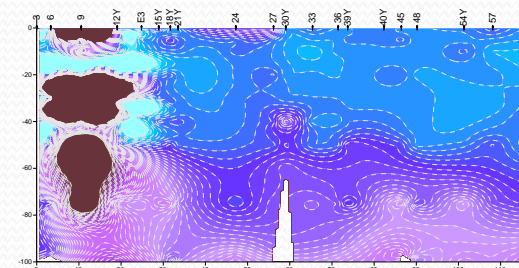
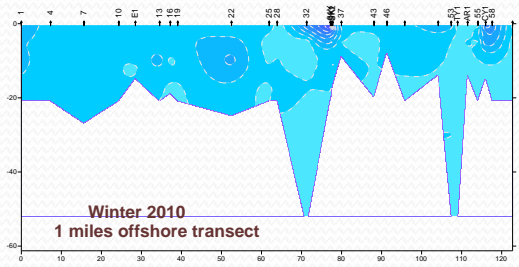
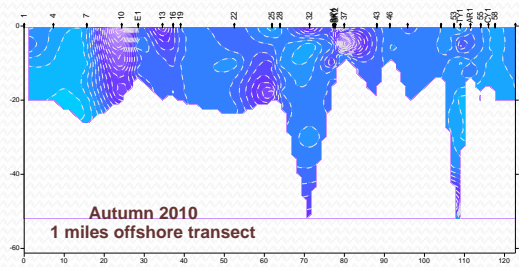
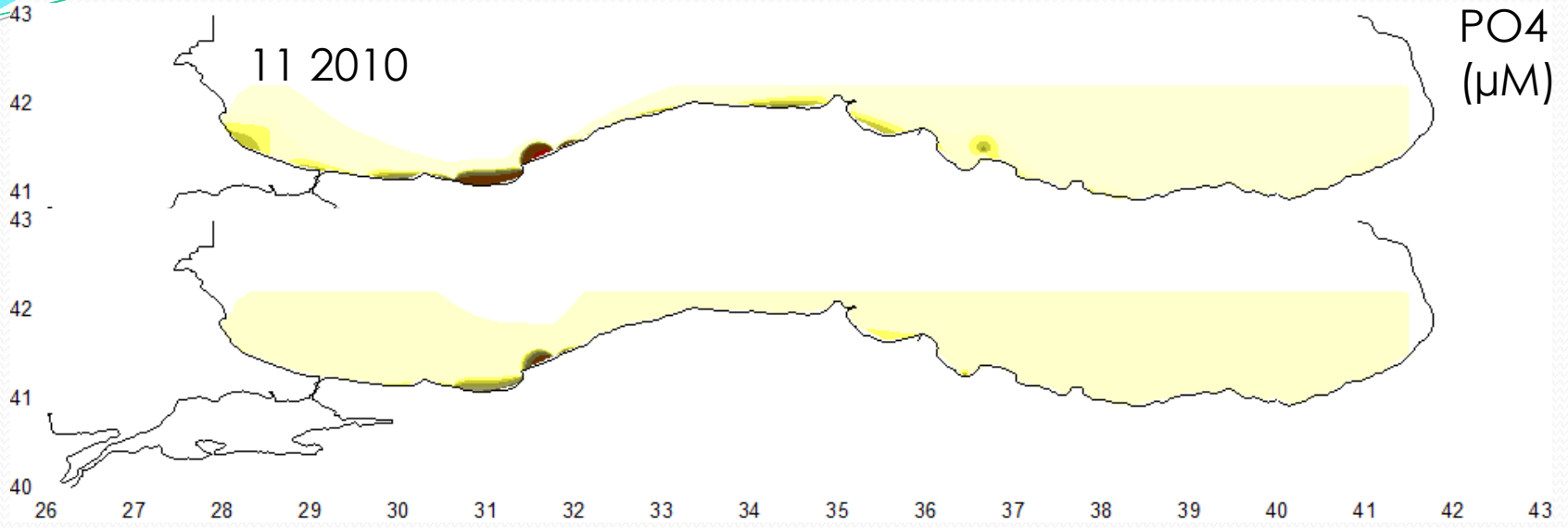


1 mile transect in Winter

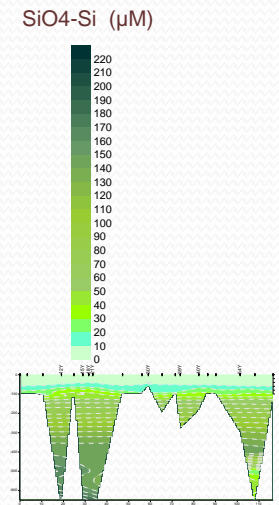
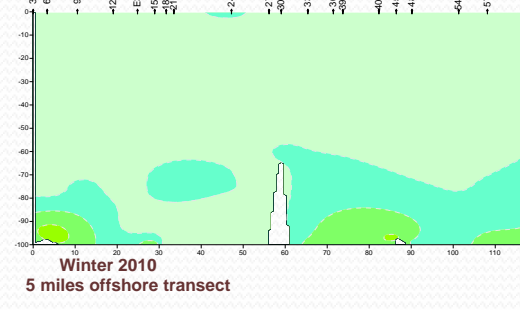
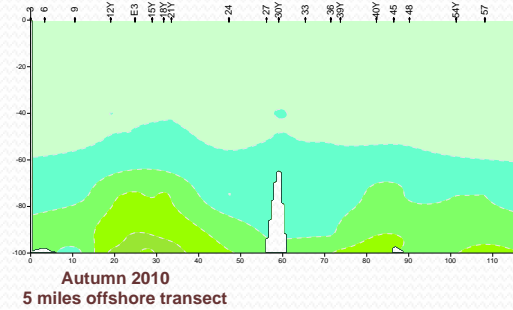
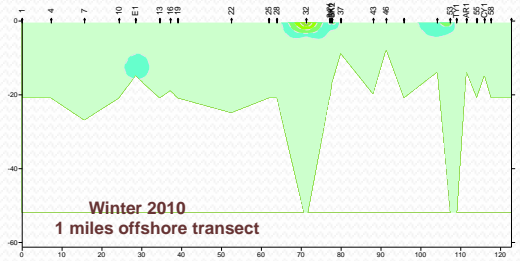
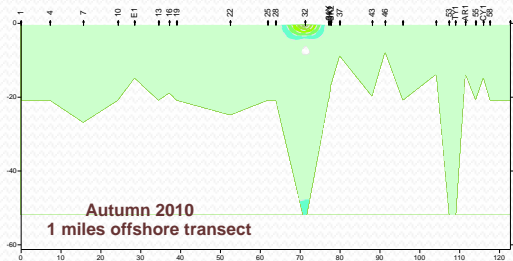
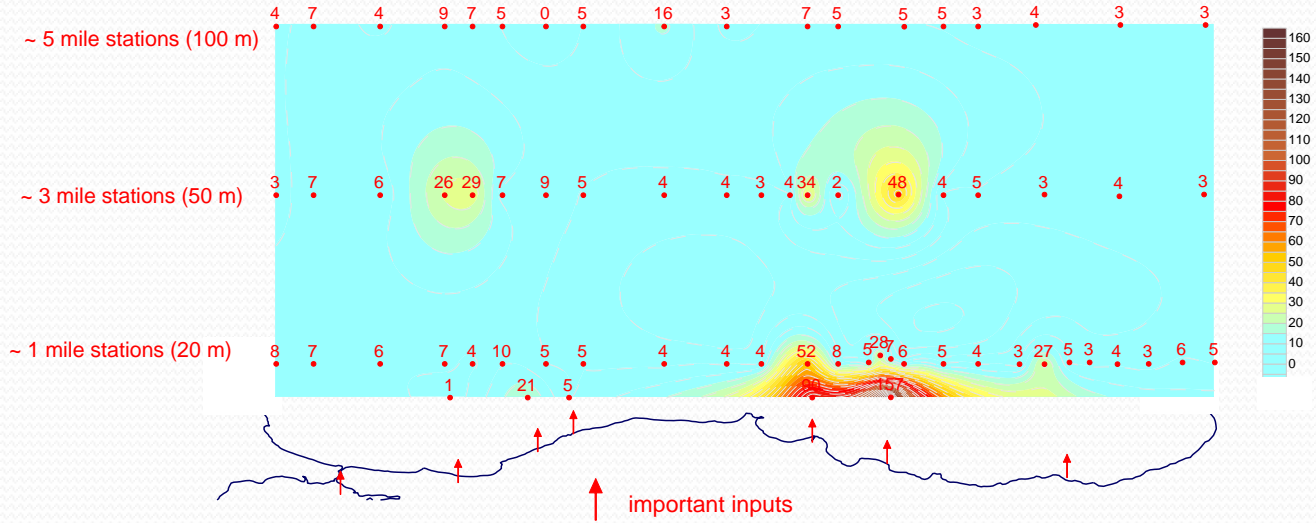


5 mile transect in Winter

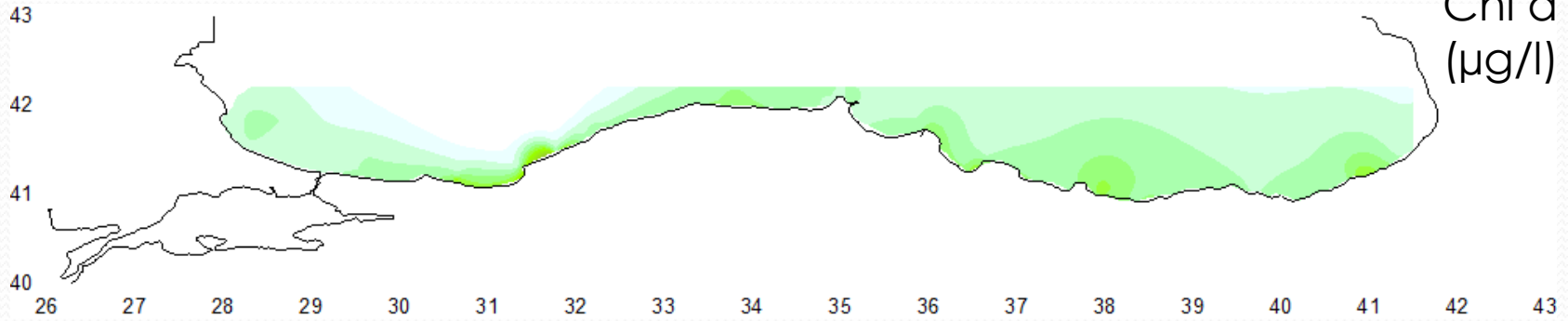




2010 Winter SiO₄-Si (μM)



11 2010



01 2011

